



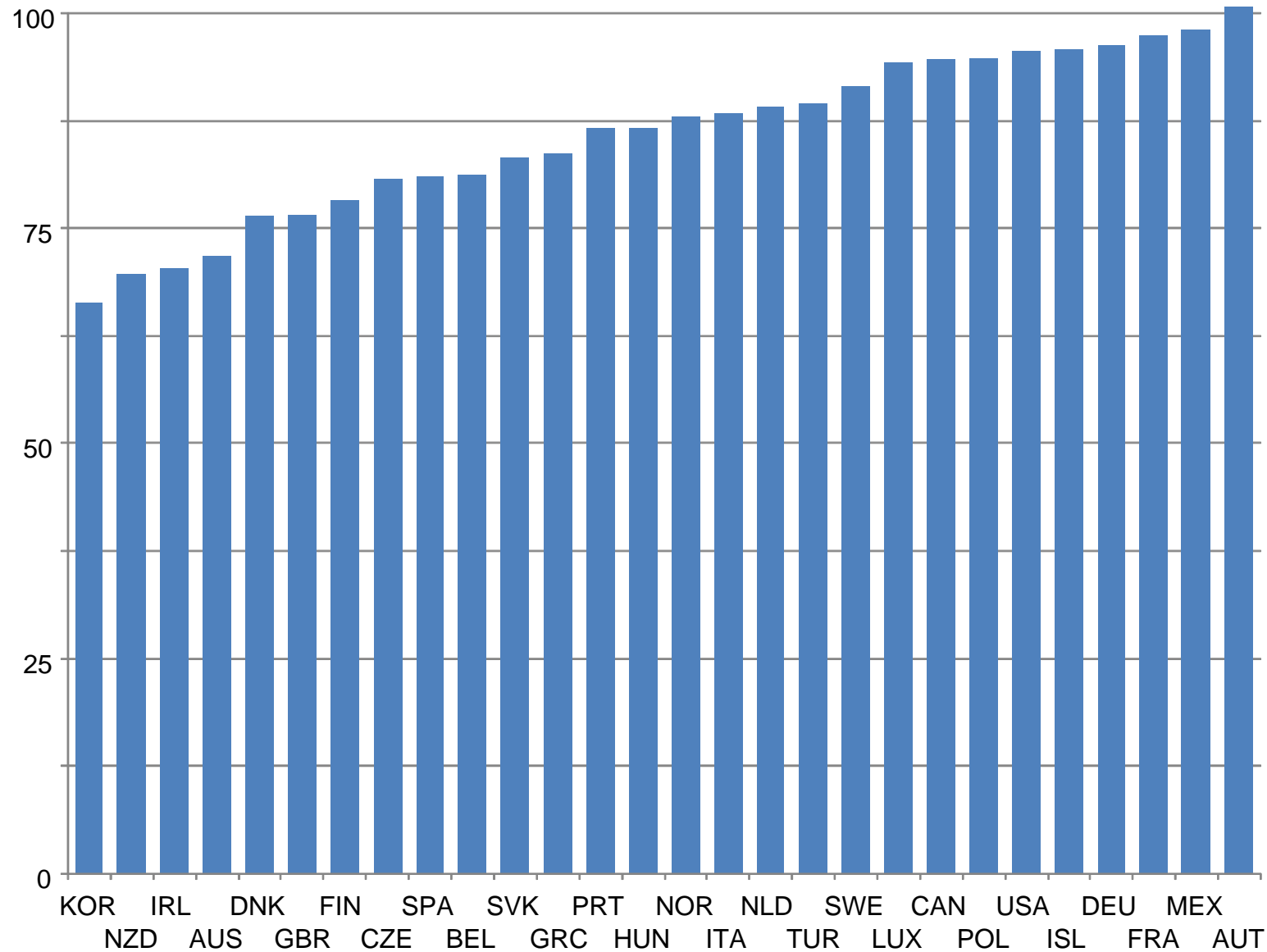
World Bank
Hitotsubashi University
Ministry of Finance
*Closing the Coverage Gap:
The Role of Social Pensions*
Tokyo, 20-22 February 2008

Socioeconomic status of older people

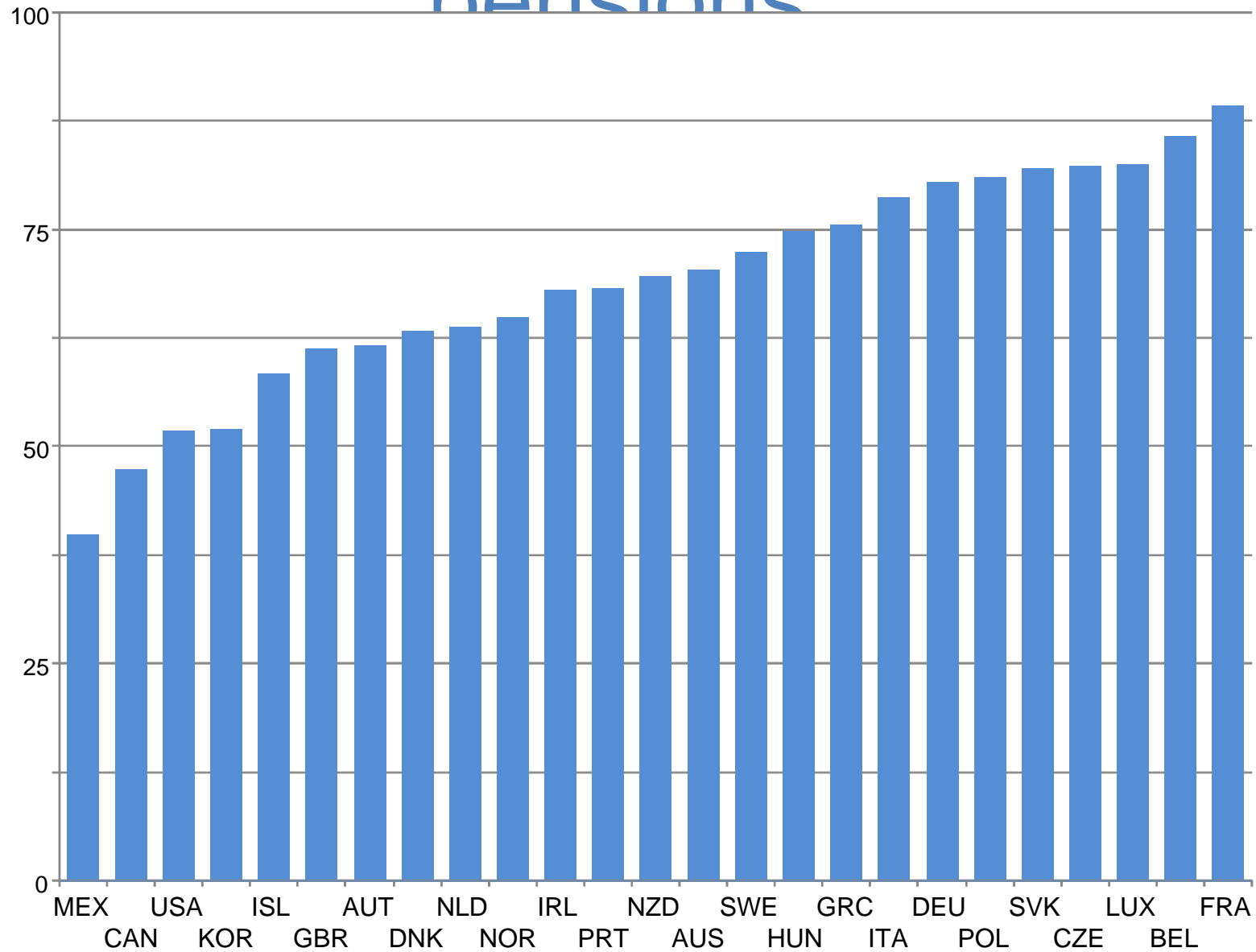
Edward Whitehouse
Social Policy Division, OECD



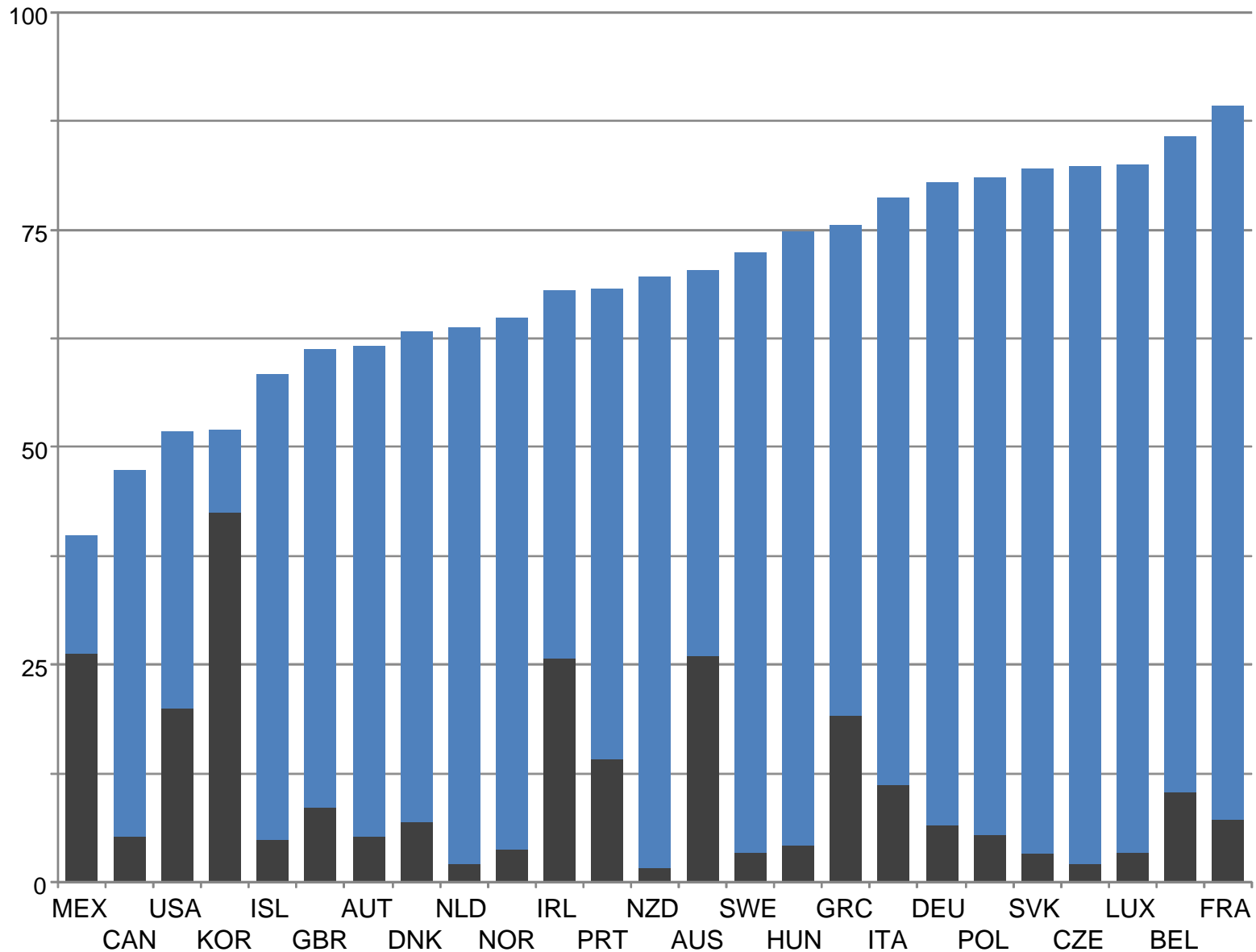
Relative incomes of older people



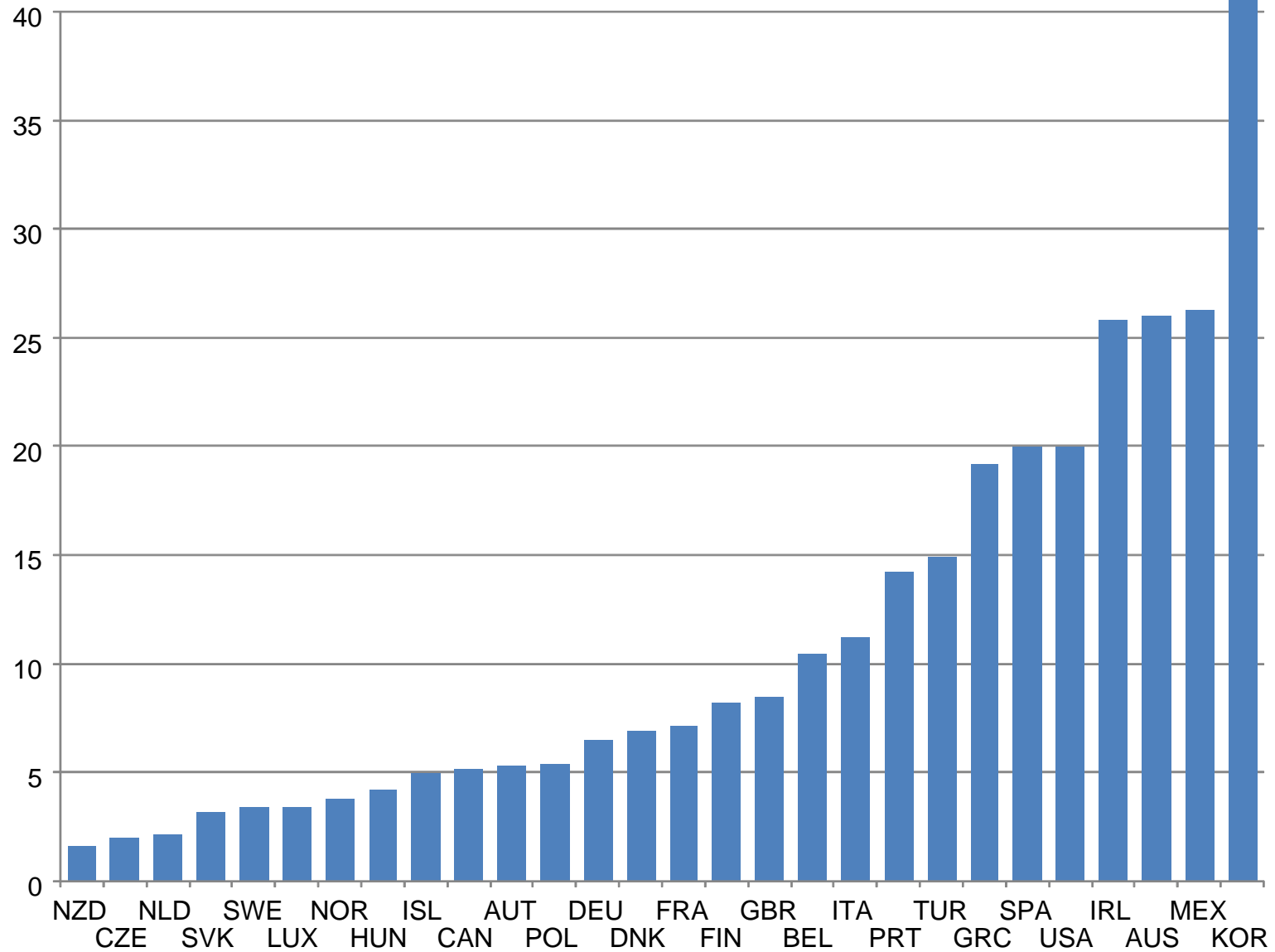
Poverty rates: before public provisions



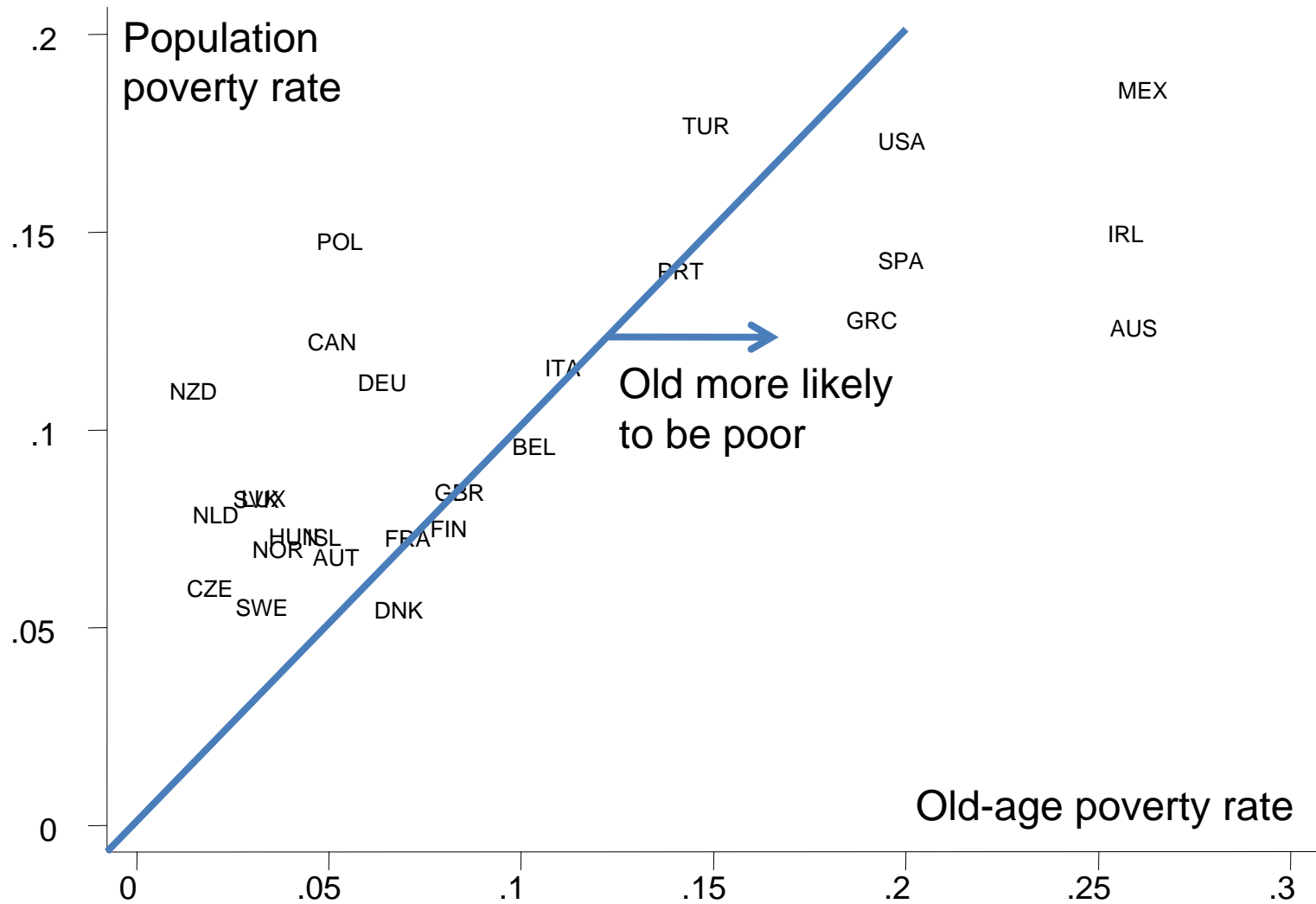
Poverty rates: before and after



Poverty rates



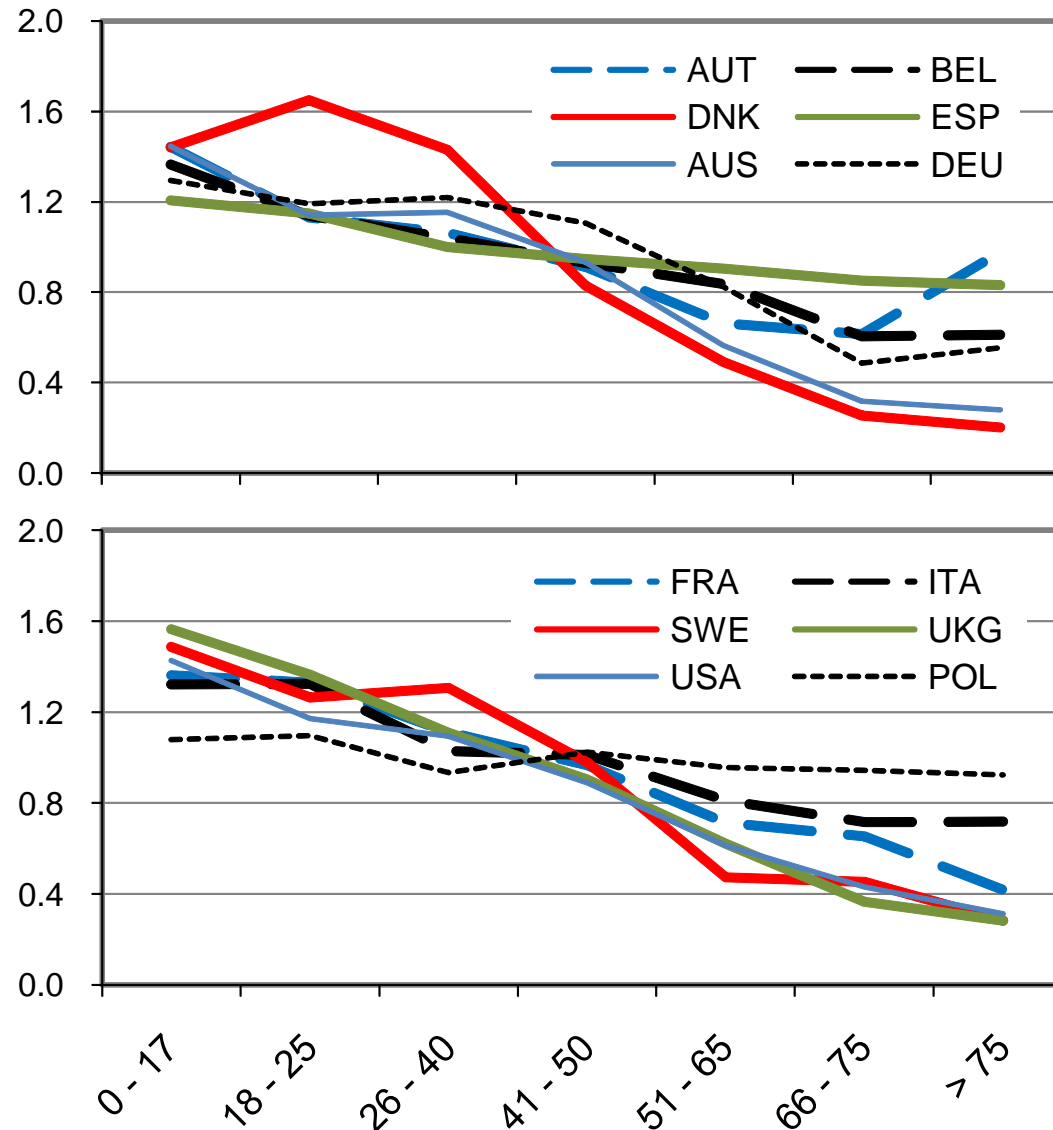
Poverty by age



Broader measures of poverty

- Material deprivation
 - inadequate heating
 - constrained food choices
 - overcrowding
 - poor environment conditions
 - arrears in utility bills
 - arrears in rents/mortgages
 - inability to make ends meet

Material deprivation by age



Conclusions

- Poverty measures indicate need for and performance of social pensions
- In nearly all OECD countries, older people should **not, currently**, be a priority for poverty reduction
- But income-distribution analysis is a backward-looking measure of pension-system performance