

Figure 1. Tajikistan and the Major Urban Settlements



Source : Illustrated by the author.

Table 1. Selected Macroeconomic Indices, 1992-2001

	(%)									
	1992	1993	1994	1995	1996	1997	1998	1999	2000	2001
Real GDP growth ^a	▲ 29.0	▲ 11.0	▲ 18.9	▲ 12.5 ^c	16.7	1.7	5.3	3.7	8.3	10.2
Real industrial production growth ^a	▲ 24.3	▲ 7.8	▲ 25.4	▲ 13.6	▲ 23.9	▲ 2.0	8.2	5.6	9.9	14.8
Inflation (annual average)	1157.0	2195.0	350.0	609.0	418.0	88.0	43.2	27.6	32.9	^d 38.7
Official unemployment rate	0.3	1.2	1.7	2.0	2.7	2.8	3.0	3.1	2.6	2.5
Fiscal balance ^b	▲ 30.5	▲ 23.4	▲ 5.4	▲ 11.9	▲ 5.8	▲ 3.3	▲ 3.8	▲ 3.1	▲ 0.6	^d 0.1
Current account balance ^b	18.4	▲ 29.9	▲ 17.8	▲ 16.0	▲ 7.1	▲ 5.4	▲ 9.1	▲ 3.4	▲ 6.4	^d 7.2
GDP per capita (in USD)	52.0	122.0	159.1	105.9	177.0	186.6	216.3	177.4	159.8	^d 161.3
Population (end of year, millions)	5.6	5.7	5.8	5.9	5.9	6.0	6.1	6.1	6.2	^d 6.5

^a In comparison to the previous year.

^b In comparison to GDP.

^c For the growth rate of 1996, the Tajik statistical authority and CIS statistical committee announced this number (SART, 2000, p. 16; CISSTAT, 2000, p. 468), but the IMF took the -4.4% (IMF, 2001, p. 3). Thus, there is a great deal of numerical conflict.

^d EBRD estimation.

Sources: CISSTAT (1999, p. 500), CISSTAT (2000, p. 484), CISSTAT (2002, p.13, p. 309, p. 312), EBRD (1999, p. 273), EBRD (2002, p. 18, p. 85), IMF (1998, p. 88), IMF (2000, p. 50, p. 63, p. 75, p. 90), IMF (2001, p. 3, p. 12, p. 17).

Table 2. Composition of Nominal GDP by Sector, 1993-2000

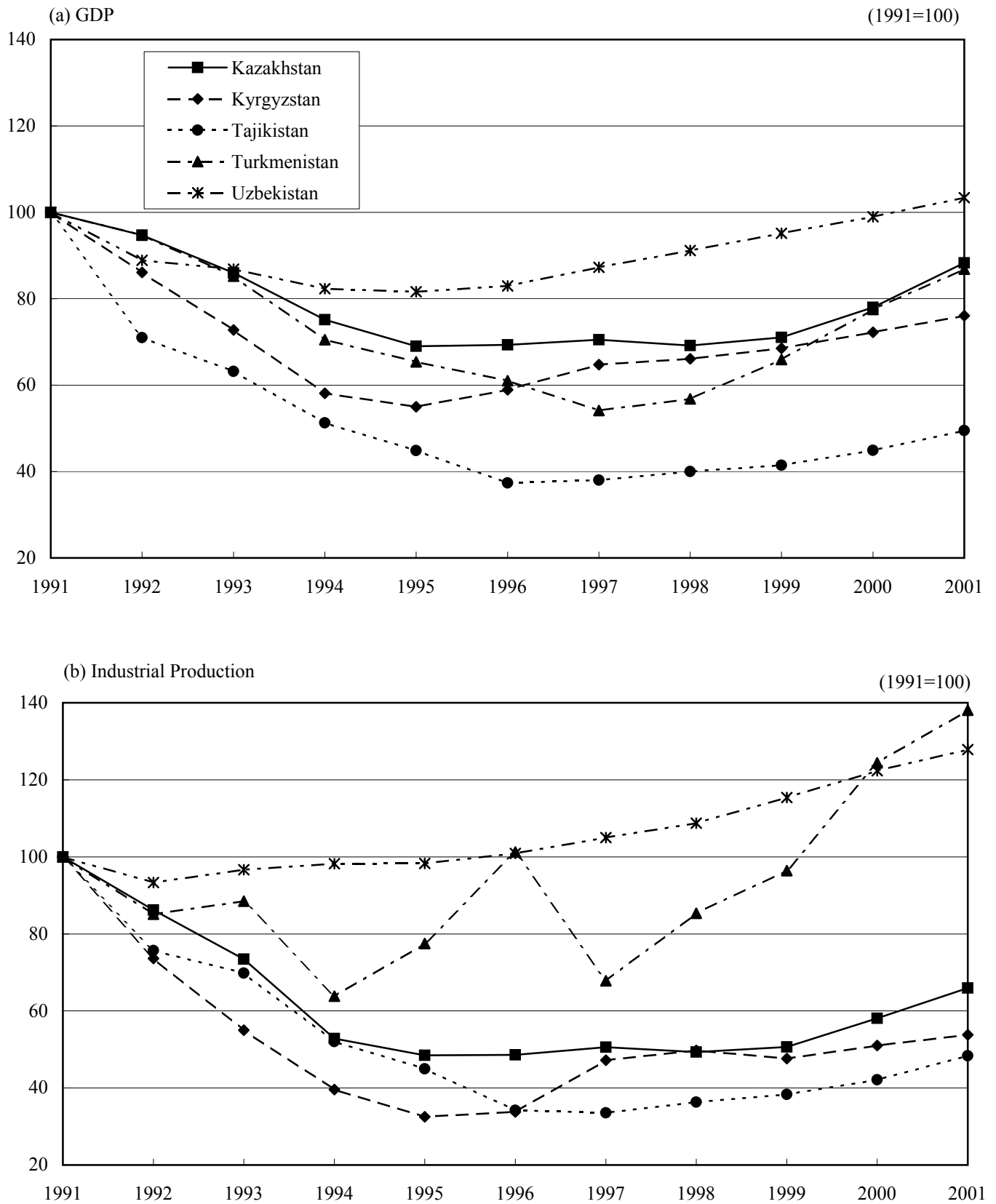
	1993	1994	1995	1996	1997	1998	1999	2000
Nominal GDP ^a	707,060	1,786,490	69,797	308,470	631,984	1,025,211	1,344,953	1,806,767
Share by sector (%)								
National economy, Total	100.0	100.0	100.0	100.0	100.0	100.0	100.0	100.0
Industry	32.8	22.0	34.0	25.7	19.7	18.1	19.1	20.4
Agriculture	21.0	19.1	36.2	36.0	27.1	19.8	16.8	17.4
Construction	9.0	10.4	3.2	2.6	2.1	1.8	3.0	2.8
Trade	3.3	13.0	7.5	14.6	10.2	16.3	14.1	10.3
Transport	1.3	2.4	4.5	4.0	1.4	1.0	1.9	3.2
Supplies	1.5	0.5	0.3	0.3	0.4	0.3	0.3	0.2
Other material sectors ^b	1.7	0.8	0.5	1.3	5.9	10.5	10.3	10.3
Nonmaterial services	19.4	11.3	8.7	7.8	18.4	21.9	24.4	25.4
Indirect taxes	10.0	20.4	4.5	7.6	14.8	10.3	10.1	10.0

^a Data for 1993 and 1994 are measured in millions of Russian roubles, and after 1995 in millions of Tajik roubles (somon).

^b Including procurement.

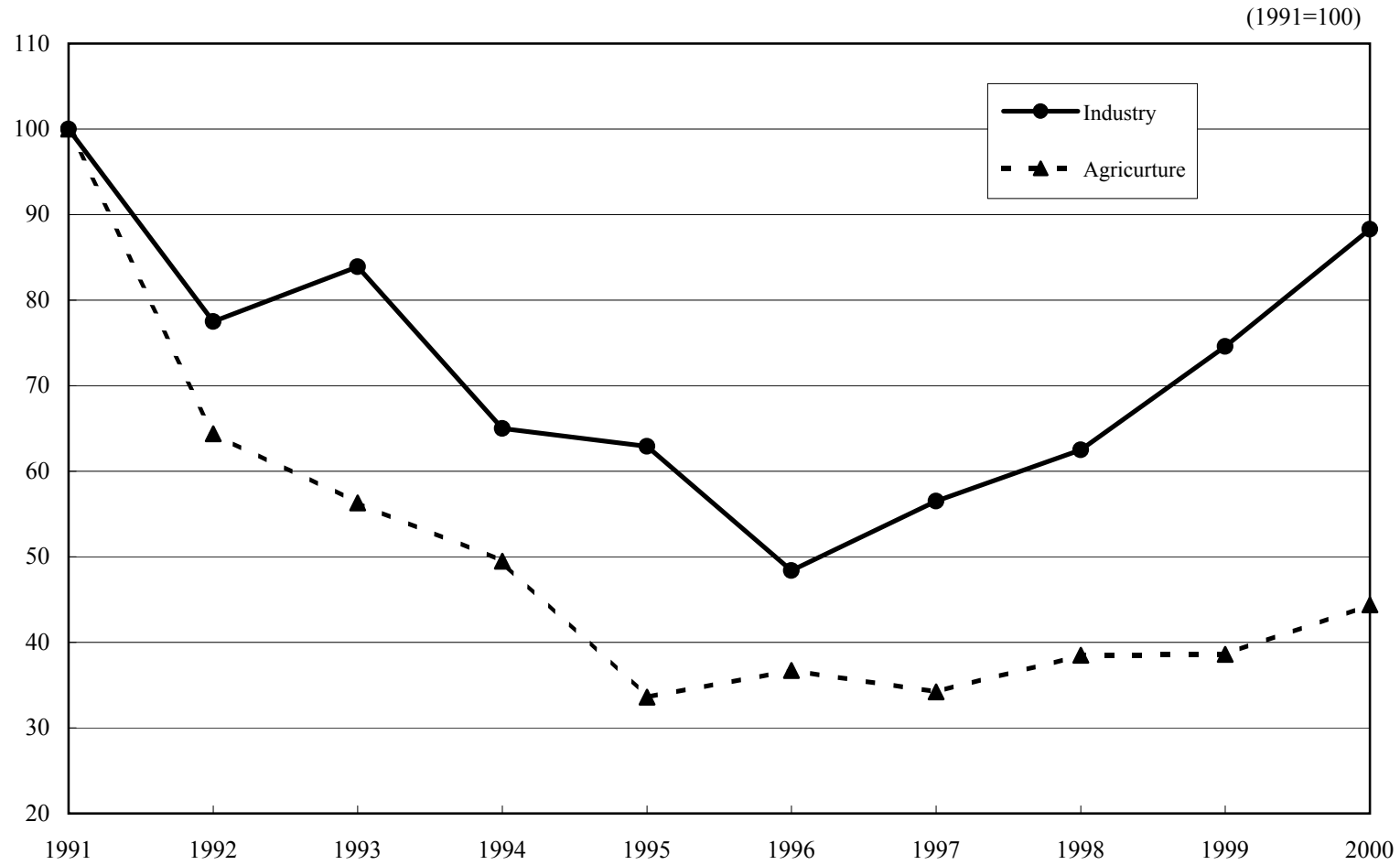
Source : IMF (1998, p. 71), IMF (2000, p. 51), IMF (2001, p. 5).

Figure 2. Trends of Real GDP and Industrial Production of the Central Asian Countries, 1991-2001



Source : Based on CISSTAT (2001, p. 12, p. 18), CISSTAT (2002, pp. 10-11), EBRD (1999, p. 227), EBRD (2002, p. 8).

Figure 3. Changes in Labor Productivity of Industry and Agriculture, 1991-2000



Sources: Based on IMF (2000, p.66), IMF (2001, p.20).

(Fig 2 original data)

	1991	1992	1993	1994	1995	1996	1997	1998	1999	2000
Industry	100	77.5	83.9	65.0	62.9	48.4	56.5	62.5	74.6	88.3
Agriculture	100	64.4	56.3	49.5	33.6	36.7	34.2	38.5	38.6	44.4

Table 3. Progress of Enterprise Privatization, 1992-2000

	1992	1993	1994	1995	1996	1997	1998	1999	2000
No. of privatized enterprises (per year) ^a	819	84	343	380	685	742	1,453	1,460	604
Industry	24	5	15	21	27	29	90	19	36
Construction	20	1	14	12	16	13	54	28	13
Transport and communication	9	1	0	5	2	8	42	19	7
Agriculture	5	1	9	5	20	60	138	189	154
Trade and catering industry	212	21	74	163	285	307	376	624	124
Service industry	521	49	200	151	242	171	339	350	87
Percentage by sector (per year) (%) ^a	100.0	100.0	100.0	100.0	100.0	100.0	100.0	100.0	100.0
Industry	2.9	6.0	4.4	5.5	3.9	3.9	6.2	1.3	6.0
Construction	2.4	1.2	4.1	3.2	2.3	1.8	3.7	1.9	2.2
Transport and communication	1.1	1.2	0.0	1.3	0.3	1.1	2.9	1.3	1.2
Agriculture	0.6	1.2	2.6	1.3	2.9	8.1	9.5	12.9	25.5
Trade and catering industry	25.9	25.0	21.6	42.9	41.6	41.4	25.9	42.7	20.5
Service industry	63.6	58.3	58.3	39.7	35.3	23.0	23.3	24.0	14.4
No. of privatized enterprises (cumulative)	819	903	1,246	1,626	2,311	3,053	4,506	5,966	6,570
Industry	24	29	44	65	92	121	211	230	266
Construction	20	21	35	47	63	76	130	158	171
Transport and communication	9	10	10	15	17	25	67	86	93
Agriculture	5	6	15	20	40	100	238	427	581
Trade and catering industry	212	233	307	470	755	1,062	1,438	2,062	2,186
Service industry	521	570	770	921	1,163	1,334	1,673	2,023	2,110
Percentage by sector (cumulative) (%)	100.0	100.0	100.0	100.0	100.0	100.0	100.0	100.0	100.0
Industry	2.9	3.2	3.5	4.0	4.0	4.0	4.7	3.9	4.0
Construction	2.4	2.3	2.8	2.9	2.7	2.5	2.9	2.6	2.6
Transport and communication	1.1	1.1	0.8	0.9	0.7	0.8	1.5	1.4	1.4
Agriculture	0.6	0.7	1.2	1.2	1.7	3.3	5.3	7.2	8.8
Trade and catering industry	25.9	25.8	24.6	28.9	32.7	34.8	31.9	34.6	33.3
Service industry	63.6	63.1	61.8	56.6	50.3	43.7	37.1	33.9	32.1

^a Data for each year is calculated backward by the author based on cumulative data

Source : CISSTAT (2001, p. 571).

Table 4. Achievement of Enterprise Privatization, As of end-September 1999

	No. of enterprises subject to privatization (a)	No. of incorporated enterprises (b)	No. of privatized enterprise (c)	Rate of incorporation (b/a)	Rate of privatization (c/a)
Small-scale enterprise ^a	5,400	...	4,727	...	87.5
Middle and large-scale enterprise ^b	750	733	125	97.7	16.7
Total	6,150	733	4,852	...	78.9

^a Less than 100 employees^b 100 and more employees

Source : IMF (2000, p. 46).

Table 5. Evolution of Industrial Output by Sector, 1993-2000

	(1992=100)							
	1993	1994	1995	1996	1997	1998	1999	2000
Industry, Total	92.2	68.8	59.4	45.2	44.3	48.0	50.6	55.7
Electric energy	106.1	103.4	102.1	99.9	112.3	115.1	128.8	115.6
Fuel	58.3	41.1	31.6	27.4	27.3	21.6	23.1	24.3
Steel	114.3	38.2	38.0	1.2	-	-	-	-
Nonferrous metallurgy	73.6	69.1	69.5	56.1	58.2	63.1	73.7	87.3
Chemical and petrochemical	57.4	39.1	40.8	32.8	31.2	18.7	15.3	22.0
Mechanical engineering and metal-working	78.0	54.9	35.7	25.2	21.0	21.4	20.5	22.5
Wood, wood-working, paper	79.1	22.4	8.8	6.1	6.5	6.3	7.9	7.2
Construction material	81.3	56.4	12.6	8.4	6.7	5.8	9.9	10.5
Light industry	112.9	84.3	78.9	42.0	36.1	37.6	38.3	39.7
Food industry	85.8	61.9	46.6	31.2	25.9	31.0	28.7	29.4

Source : Author's calculation based on CISSTAT (2001, p. 577).

Table 6. Compositon of Industrial Production by Sector at Constant Prices, 1993-2000

	1993	1994	1995	1996	1997	1998	1999	2000
Industry, Total	100.0	100.0	100.0	100.0	100.0	100.0	100.0	100.0
Electric energy	4.7	6.2	13.0	16.7	11.5	6.9	8.7	6.6
Fuel	0.7	0.7	0.3	0.4	0.3	0.2	0.2	0.2
Nonferrous metallurgy	20.0	26.8	33.2	35.2	40.4	33.3	49.5	56.9
Chemical and petrochemical	3.8	3.8	3.9	4.1	3.2	1.8	1.6	1.7
Mechanical engineering and metalworking	4.8	4.3	3.2	2.9	1.8	1.7	1.1	0.8
Wood, wood-working, paper	1.4	0.4	0.1	0.1	0.1	0.1	0.0	0.0
Construction material	3.8	3.4	1.4	1.2	1.0	0.9	1.2	0.7
Light industry	34.7	31.2	23.3	16.3	17.3	22.7	13.2	15.7
Food industry ^a	25.1	22.6	21.0	20.9	23.7	31.8	23.7	17.0
Other Industries	1.0	0.6	0.6	2.2	0.7	0.6	0.8	0.4

^a Including flour grinding.

Source: IMF (2000, p. 58), IMF (2001, p. 12).

Table 7. Trade Balance and Composition by Product, 1993-2000

	1993	1994	1995	1996	1997	1998	1999	2000
Total exports, f.o.b. (in millions of USD) (a)	456	559	779	770	746	586	666	791
Aluminium	230	313	390	263	252	234	284	393
Cotton fiber	117	155	212	157	167	112	93	92
Electricity	30	29	123	175	155	103	175	184
Others	79	62	53	176	172	137	115	123
Total imports, c.i.f. (in millions of USD) (b)	660	707	838	786	809	731	693	839
Alumina	108	146	188	111	107	110	130	179
Natural gas	48	84	70	37	39	39	34	55
Petroleum products	53	79	80	61	60	75	60	64
Electricity	26	19	164	133	180	117	179	205
Grain and flour	95	113	46	53	24	41	44	43
Others	330	266	290	391	400	350	246	293
Trade Balance (a-b)	▲ 204	▲ 148	▲ 59	▲ 16	▲ 63	▲ 145	▲ 27	▲ 48
Share of major export goods (%)								
Aluminium	50.4	56.0	50.1	34.2	33.8	39.9	42.6	49.7
Cotton fiber	25.7	27.7	27.2	20.4	22.4	19.1	14.0	11.6
Electricity	6.6	5.2	15.8	22.7	20.8	17.6	26.3	23.3
Others	17.3	11.1	6.8	22.9	23.1	23.4	17.3	15.5
Share of major import goods (%)								
Alumina	16.4	20.7	22.4	14.1	13.2	15.0	18.8	21.3
Natural gas	7.3	11.9	8.4	4.7	4.8	5.3	4.9	6.6
Petroleum products	8.0	11.2	9.5	7.8	7.4	10.3	8.7	7.6
Electricity	3.9	2.7	19.6	16.9	22.2	16.0	25.8	24.4
Grain and flour	14.4	16.0	5.5	6.7	3.0	5.6	6.3	5.1
Others	50.0	37.6	34.6	49.7	49.4	47.9	35.5	34.9

Source : IMF (2000, pp. 90-91), IMF (2001, pp. 44-45).